

MONTHLY MEMBERSHIP PROGRESS REPORT

District 4 A2

Results as of: 5/31/2026

GMT:

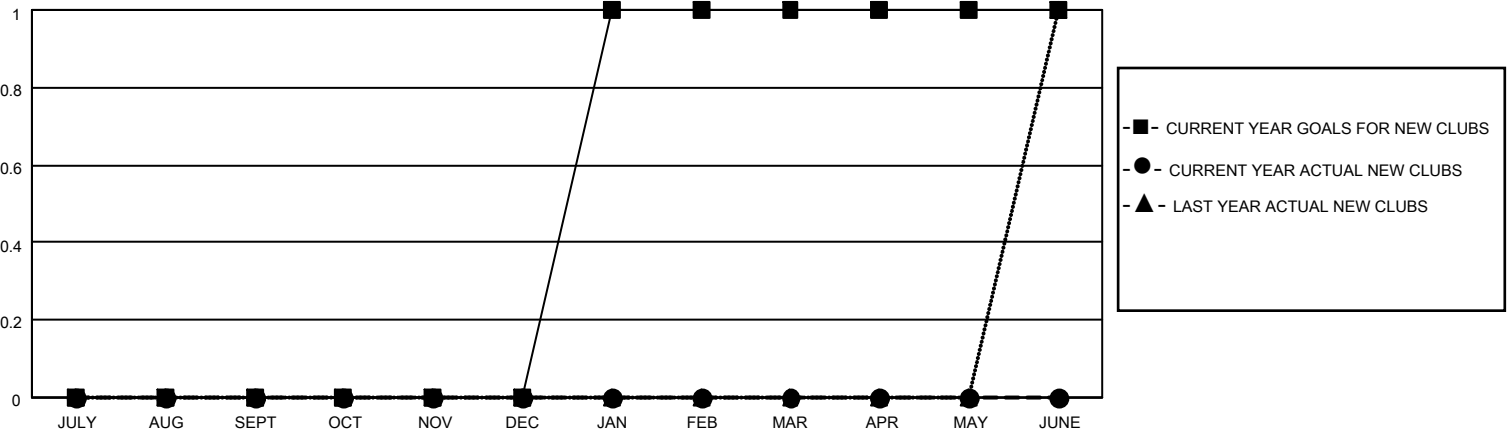
LOCATION CALIFORNIA

GMT CA

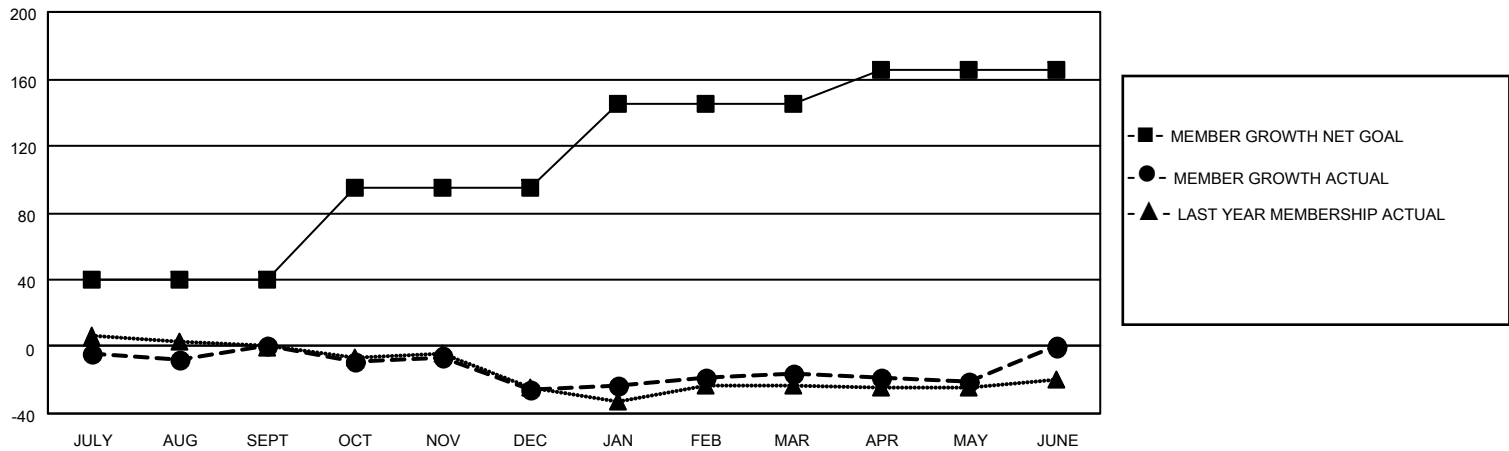
Clubs			
RESULTS FOR 2025-2026			
QUARTER	NEW CLUB GOAL	NEW CLUBS	DROPPED CLUBS
JULY/AUG/SEPT	0	0	0
OCT/NOV/DEC	0	0	0
JAN/FEB/MAR	1	0	1
APR/MAY/JUNE	0	0	0

Members			
RESULTS FOR 2025-2026			
QUARTER	MEMBER GROWTH NET GOAL	MEMBER GROWTH ACTUAL	DROPPED MEMBERS ACTUAL (including transfers)
JULY/AUG/SEPT	40	80	72
OCT/NOV/DEC	55	28	49
JAN/FEB/MAR	50	55	38
APR/MAY/JUNE	20	36	39

GOALS AND ACTUAL NEW CLUBS CUMULATIVE



GOALS AND ACTUAL MEMBERS CUMULATIVE



DROPPED CLUBS: 1	
DROPPED MEMBERS	
DECEASED	22
CLUB CANCELLED	0
OTHER	175
TOTAL	197

39 CLUBS OF 61 ADDED 1 OR MORE NEW MEMBERS

GENDER DISTRIBUTION	
MALE	1,194 (69.54%)
FEMALE	514 (29.94%)

[CLICK HERE FOR CUMULATIVE MEMBERSHIP DATA](#)

TOTAL FAMILY UNIT MEMBERS	235
FAMILY MEMBERS PAYING HALF DUES	123